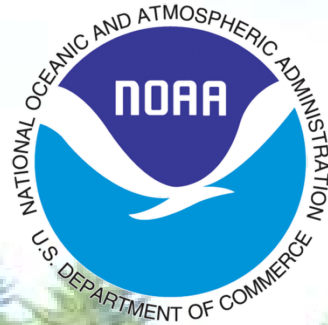


WOOD-PAWCATUCK WATERSHED ASSOCIATION



Dam Removal Project Manager Training *Permitting in Rhode Island*



WWW.WPWA.ORG

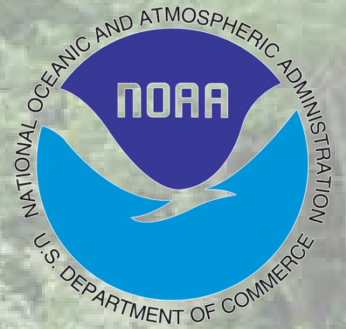
To Protect & Preserve the Lands and Waters of the Wood Pawcatuck Watershed

Christopher J. Fox
WPWA, Exec. Dir.
chris@wpwa.org
(401) 539-9017

March 8th 2011



Rhode Island Dam Removal Permitting



First, A Few Things You Should Consider.....

**New Process For
Rhode Island**

**Time to Prepare, Submit, &
Obtain Permit Approval Can
Take Years**

Each Site & Project Is Unique

Understand Your Role and Obligations

Representation By A Qualified Engineering Firm

Rely On Your Partners For Technical Support

Consult ALL Local Interests (Residents, Historic, Recreational, Business, Towns, etc)

**Working *WITH* the Regulators,
Not Against Them**



Wood Pawcatuck Watershed Association
www.wpwa.org





Rhode Island Dam Removal Permitting



One Step At A Time

Feasibility Study Identified Specific Challenges

Obtain Public Input Prior to Permitting

Qualified Engineer Representation

Pre Application Meetings

Refine Investigations & Tailor Designs

Prepare & Submit Application

Present Project to the Public

Respond To Comments

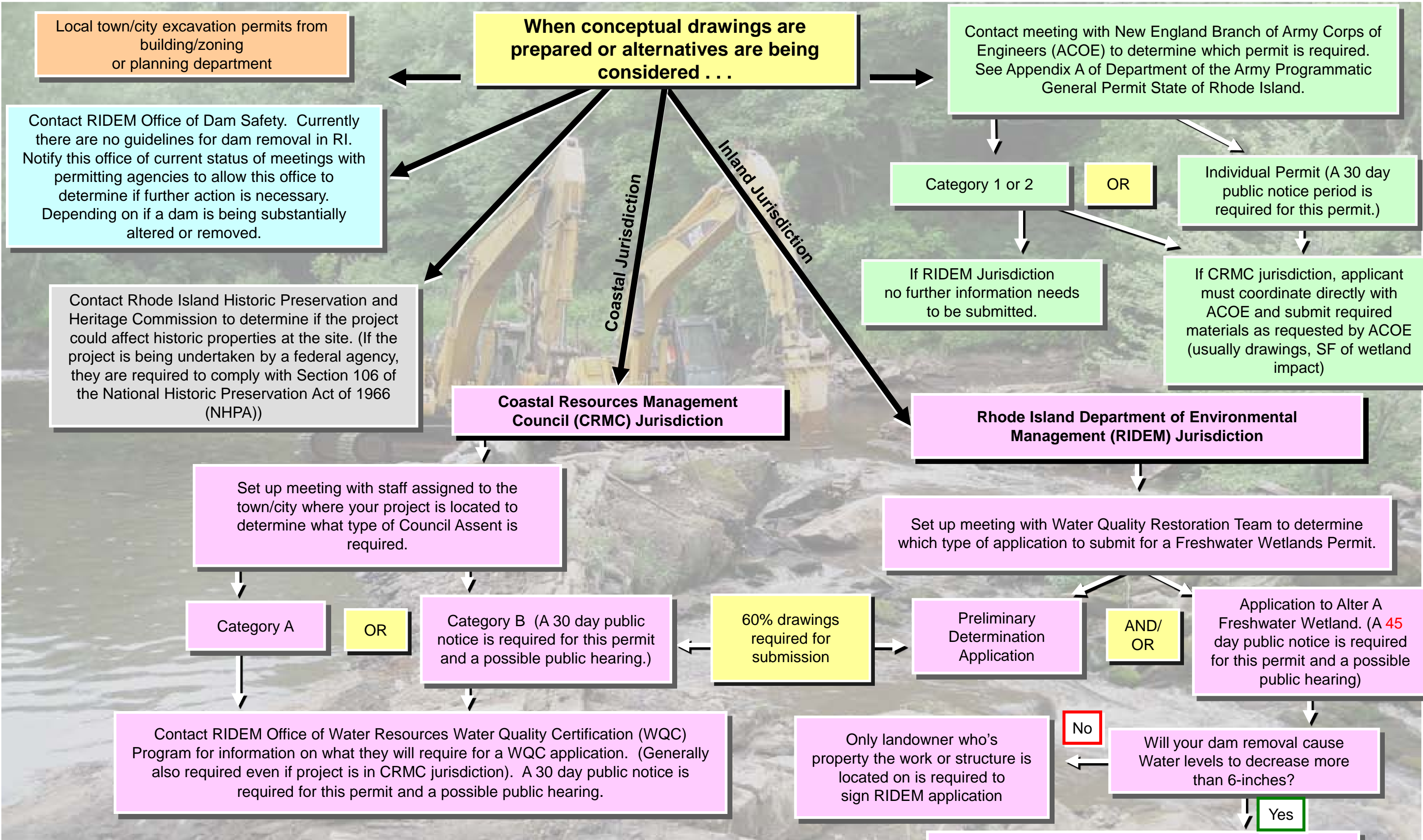
Secure ALL Permits

Bid & Award Project

Value Engineer with Contractor

Discuss & Present Permit Modifications





Information on this chart is intended as a guide and does not include all permitting information required for each agency. See the most current permitting requirements at the following websites:
 RIDEM – www.dem.ri.gov/programs/benviron/water/permits/fresh/index.htm CRMC - www.crmc.ri.gov/regulations.html
 ACOE - [www.nae.usace.army.mil/reg/RI%20PGP%20Issuance%20\(no%20PN\).pdf](http://www.nae.usace.army.mil/reg/RI%20PGP%20Issuance%20(no%20PN).pdf)



Wood Pawcatuck Watershed Assn.
WWW.WPWA.ORG

Landowner required to sign RIDEM application while other affected owners will merely need to be notified and solicited for comment as part of the public notice process.



What To Expect *Scheduling & Costs*

Existing Material Review	95 Hours	\$10,000
Wetland Delineation	24 Hours	\$5,000
Supplemental Field Survey	120 Hours	\$20,000
Preliminary Design	340 Hours	\$40,000
Hydraulic Modeling	170 Hours	\$20,000
Historic Coordination (SHPO & THPO)	30 Hours	\$3,500
Sediment Assessment & Management Plan	105 Hours	\$24,000
Abutter Research	20 Hours	\$2,500
<u>Prepare Regulatory Application Materials & Responses</u>	440 Hours	\$52,000
SUBTOTAL	1038 Hours	\$177,000
Final Design Plans, Bid Documents, Bidding Assistance	210 Hours	\$24,000
Construction Oversight Services	500 Hours	\$75,000
Opinion Of Construction Costs		\$0-\$1,000,000+

Costs May Be Significantly Reduced If Sponsor, Funders, or Volunteers Undertake These Tasks

How to Permit a Dam Removal Project in Rhode Island

Resource List



Wood Pawcatuck Watershed
Association www.wpwa.org

Identify the location of your project:

www.dem.ri.gov/maps/wetjuris.htm

RIDEM Permitting Documents:

General Freshwater Wetlands Permitting Page

<http://www.dem.ri.gov/programs/benviron/water/permits/fresh/index.htm>

Water Quality Restoration Fact Sheet

<http://www.dem.ri.gov/programs/benviron/water/wetlands/pdfs/wqwrteam.pdf>

Office of Compliance and Inspection, Dam Safety Program Page

<http://www.dem.ri.gov/programs/benviron/compinsp/dams.htm>

RIDEM Permitting Contacts:

Water Quality Restoration Team Contact

Lisa McGreavy - lisa.mcgreavy@dem.ri.gov (401) 222.4700, Ext. 7611.

Water Quality Certification Contact

Terry Walsh - terry.walsh@dem.ri.gov (401) 222.4700, Ext. 7243.

Office of Compliance and Inspection (Dam Safety) Contact

Paul Guglielmino - paul.guglielmino@dem.ri.gov (401) 222-4700, Ext. 7122

CRMC Permitting Documents:

General CRMC Permitting Page

<http://www.crmc.ri.gov/regulations.html#programs>

CRMC Program Regulations (a.k.a. the “Red Book”)

<http://www.crmc.ri.gov/regulations/RICRMP.pdf>

CRMC Application forms and Checklists

<http://www.crmc.ri.gov/applications.html#apps>

CRMC Permitting Contacts:

<http://www.crmc.ri.gov/contact.html>

Army Corps of Engineers Permitting Documents

[http://www.nae.usace.army.mil/reg/RI%20PGP%20Issuance%20\(no%20PN\).pdf](http://www.nae.usace.army.mil/reg/RI%20PGP%20Issuance%20(no%20PN).pdf)

Army Corps of Engineers Permitting Contacts

Regulatory/Permitting Division

Michael Elliott - michael.j.elliott@usace.army.mil (978) 318-8131

Rhode Island Historical Preservation and Heritage Commission Project Review

Jeffrey Emidy - jeffrey.emidy@preservation.ri.gov (401) 222-4134



Wood Pawcatuck Watershed
Association www.wpwa.org

Rhode Island Emergency Management Agency FEMA Flood Map Revision

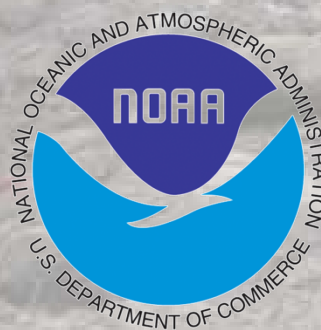
<http://www.riema.ri.gov/contact/>

Contact: Michelle Burnett – RIEMA Floodplain Manager
michelle.f.burnett@us.army.mil (401) 946-9996

*Consult the municipal building official regarding local building permit requirements
and legal construction hours

Christopher J. Fox
WPWA, Exec. Dir.
chris@wpwa.org
(401) 539-9017

Special Thanks To.....



Wood Pawcatuck Watershed
Association www.wpwa.org