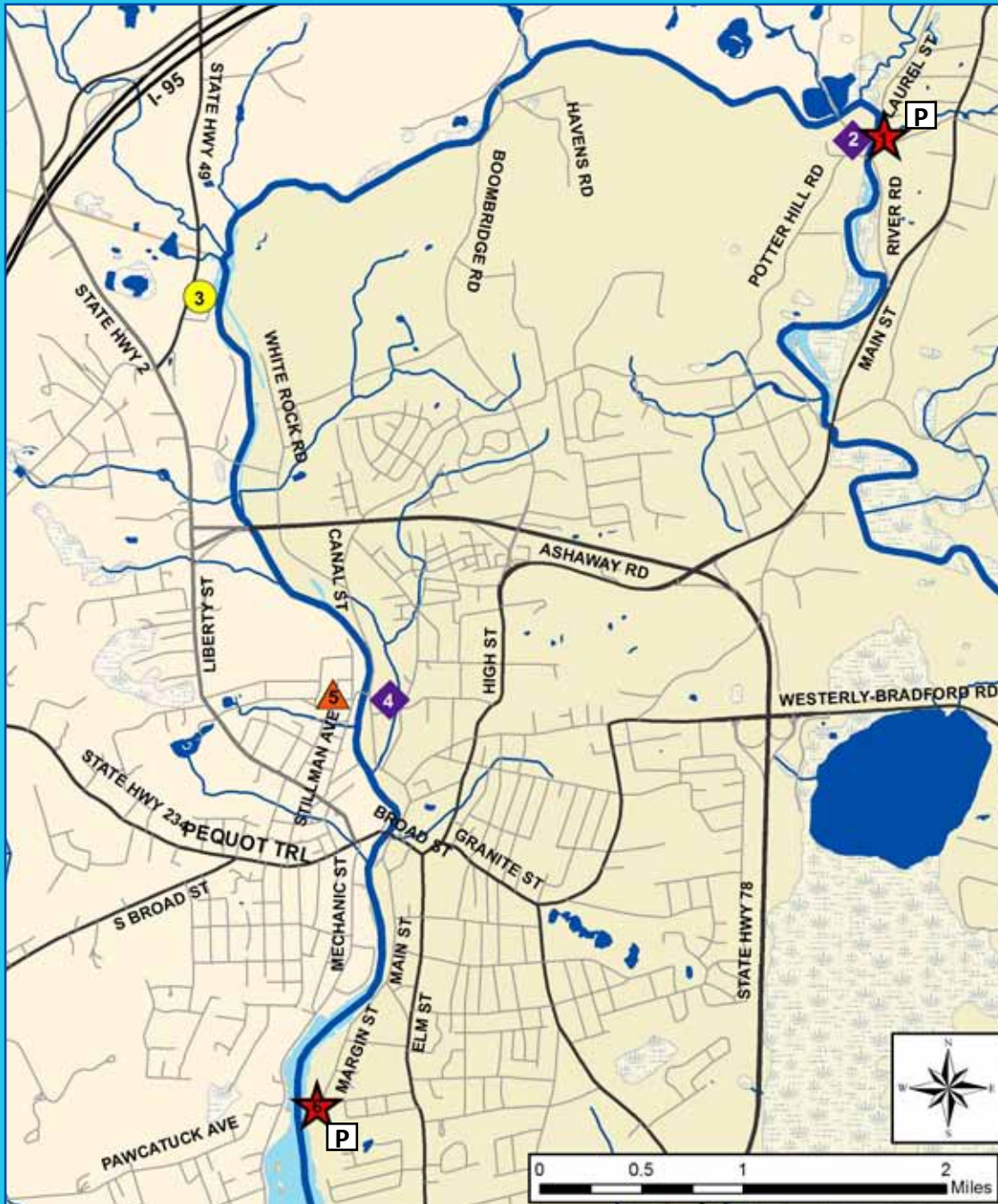


# WOOD-PAWCATUCK WATERSHED ASSOCIATION

## POTTER HILL MILL TO WESTERLY MUNICIPAL BOAT RAMP



|             |   |
|-------------|---|
| LEVEL       | Intermediate  |
| START       | Potter Hill Mill, Laurel St., Ashaway                               |
| END         | Municipal Boat Ramp, Margin St., Westerly                           |
| RIVER MILES | 6.9 miles   |
| TIME        | 5 hours   |
| DESCRIPTION | One section of class II rapids, tidal section, one possible portage |
| SCENERY     | Forest, commercial  |
| ACCESS      | Street parking, municipal boat ramp/parking                         |

| MAP LEGEND |                    |
|------------|--------------------|
|            | WATER ACCESS       |
|            | WATER              |
|            | CAUTION            |
|            | POINTS OF INTEREST |
|            | ROADS              |
|            | PORTAGE            |
|            | PARKING            |

### Potter Hill Mill to Westerly (About 6.9 miles)

From Ashaway to Little Narragansett Bay, the river is the boundary between Rhode Island and Connecticut. **Put in** from Laurel St., right bank below the dam . This is a beautiful, bucolic section of the river. After passing under Boom Bridge Rd. it is about 1.5 miles to White Rock, formerly the site of a dam which was removed by the Nature Conservancy in 2015 as a fish passage project. A broken down dam at Stillman Ave. can be run down the millrace to the left, about 200 yards of class II whitewater. To avoid the whitewater, lift across the dam on the right bank at the willow tree . You are now in tidal water. Below the dam the river runs through downtown Westerly, RI on your left and Pawcatuck, CT on your right, with interesting views of commercial buildings. **Take out** 300 yards below the Broad St. bridge, left bank, at the Westerly municipal ramp and parking lot.